

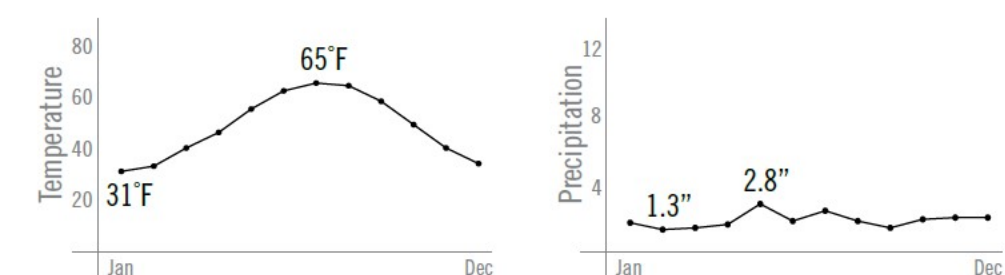
## Cork Screw House | rundzwei Architekten

Situated on a typical residential plot in a Berlin suburb, the Cork Screw House can be understood as the interaction between a sculpted ground plane and an elevated cork roof volume. A series of staggered programmed levels are carved into the otherwise level terrain, including a main bedroom, living, dining, and kitchen areas. At the lowest level, the main

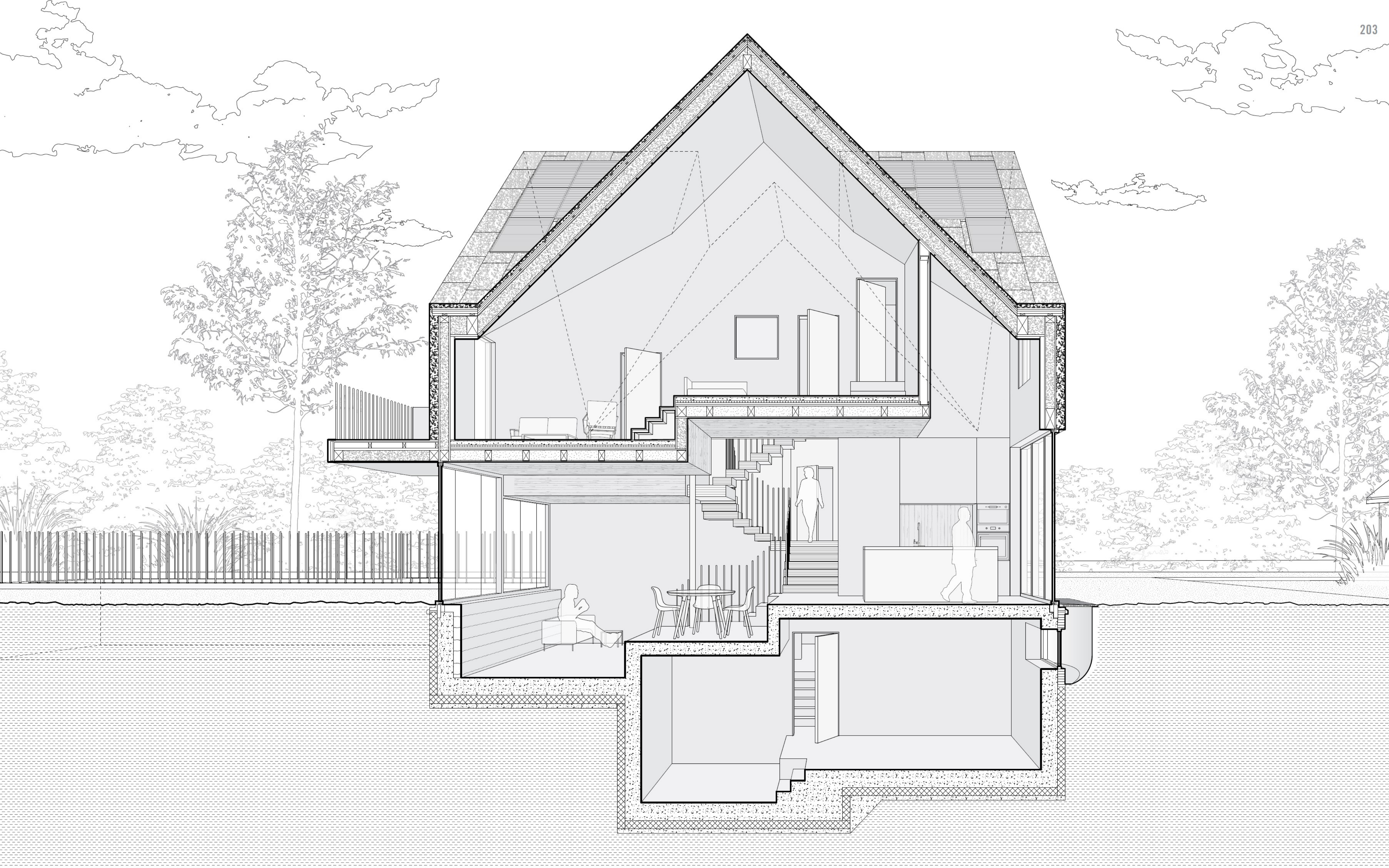
bedroom links to a linear pool that extends into the surrounding garden, shielded from view. The upper levels comprise two additional bedrooms and baths, each with their own living and dining areas, intended to allow for future conversion of the residence into studio apartments, with a study space at the topmost level. The base and top split-level organization

maximizes spatial efficiencies and floor area within a limited footprint. The upper volume, separated from its base by large sheets of glass, is timber-framed and clad in a monolithic skin of recycled cork. The four intersecting roof ridges, which produce the distinctive gabled façade, join at a central skylight and are partially clad with flush solar panels.

## Berlin, Germany | 2018







## Cork Screw House

An inhabitable gabled roof appears to float above a series of staggered floor planes, carved into the suburban site. The *raumplan*-like arrangement of these sheared levels incorporates a main bedroom and allows for visual and spatial continuities between the living, dining, and kitchen areas that lead to the house's central stair. The lower levels are finished

with rammed concrete walls that terminate on level with the surrounding ground. Large-scale glazing allows for ample daylight to infiltrate these earthbound levels, visually disconnecting the upper volume from the lower house while the rammed concrete walls provide textural relief. The staircase, constructed of staggered CLT planes, appears suspended from above

and continues the spiraling logic of the lower levels into the upper floors. The upper-level volume is articulated as a four-sided gable roof, framed in timber, punctuated by rectangular windows and sheathed entirely in a thick skin of cork panels. Cork was utilized for its natural moisture and mold resistance, insulative capacity, and acoustical properties as well

as its monolithic appearance, allowing this hovering volume to appear paradoxically both massive and suspended.